

# Traditions of Clothing Repair

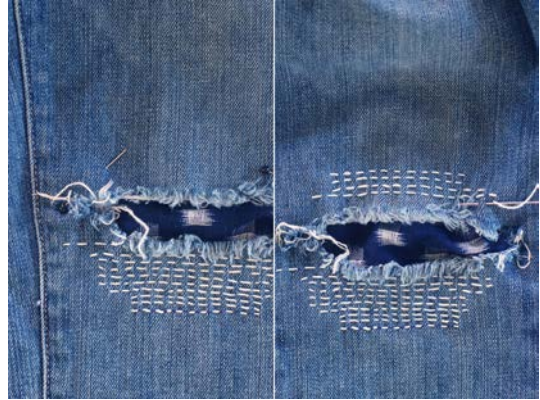
Banjara- Indian



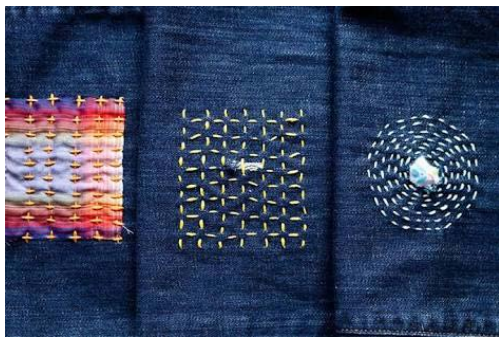
Embroidery



Boro — Japanese

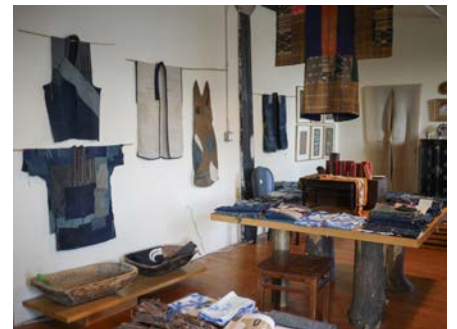


Sashiko-Japanese



Patchwork =

American, Egyptian, Indian, Japanese



## Embroidery

the craft of decorating fabric or other materials using a needle to apply thread or yarn.

## Patchwork

Patchwork or "pieced work" is a form of needlework that involves sewing together pieces of fabric into a larger design. The larger design is usually based on repeating patterns built up with different fabric shapes (which can be different colors). These shapes are carefully measured and cut, basic geometric shapes making them easy to piece together.

## Boro

A class of Japanese textiles that have been mended or patched together.

## Banjara

A community usually described as nomadic people from the northwestern belt of the Indian subcontinent (from Afghanistan to the state of Rajasthan) but now found in other areas of India also.

## Sashiko

A form of decorative reinforcement stitching (or functional embroidery) from Japan that started out of practical need during the Edo era.

## What do people know and think about clothing repair? A case study of the 'Make, Do and Mend' project

An interdisciplinary team of researchers at Sheffield Hallam University established 'Make, Do and Mend' in 2013. The project was developed to explore what people think and know about clothing repair, and to identify what is needed to support and encourage people to engage in mending practices. This was with the intention of A: identifying methods that would reinvigorate community-based approaches to clothing repair, and B: documenting the potential roles for online activities to facilitate knowledge exchange, build communities and revisit repair processes and strategies.

